

Utility Tariff 2025



@taqadistribution



taqadistribution.com



800 2332

Dear Valued Customer,

This document details the utility tariffs for the different customer segments as of 1 January 2025

For further information about the tariff or to find out more about how your consumption charges are calculated, please visit **www.taqadistribution.com**.



Water



Electricity



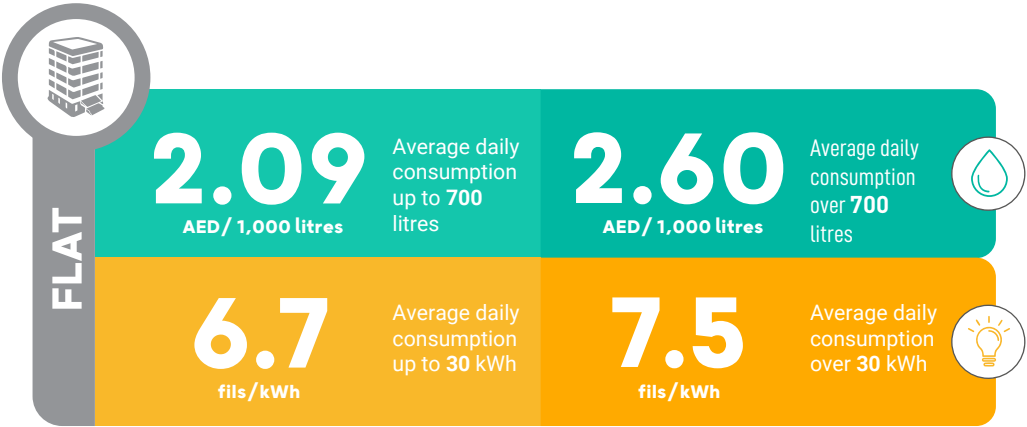
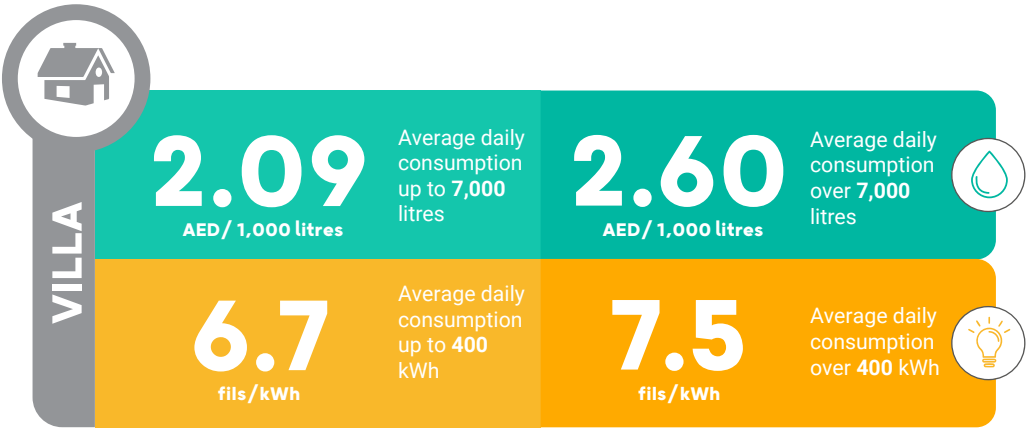
Recycled water



Electric Vehicle

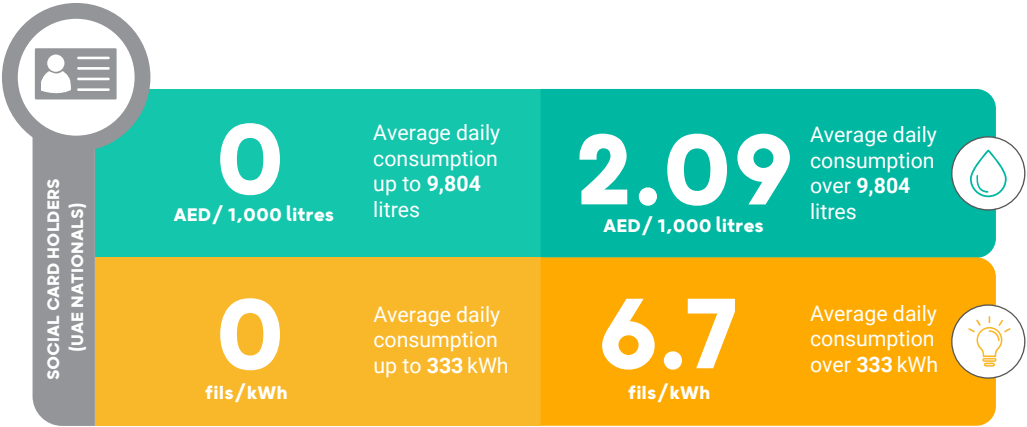
Residential Customers - UAE Nationals

Residential customers that demonstrate their UAE nationality, by UAE Passport and Emirates ID.



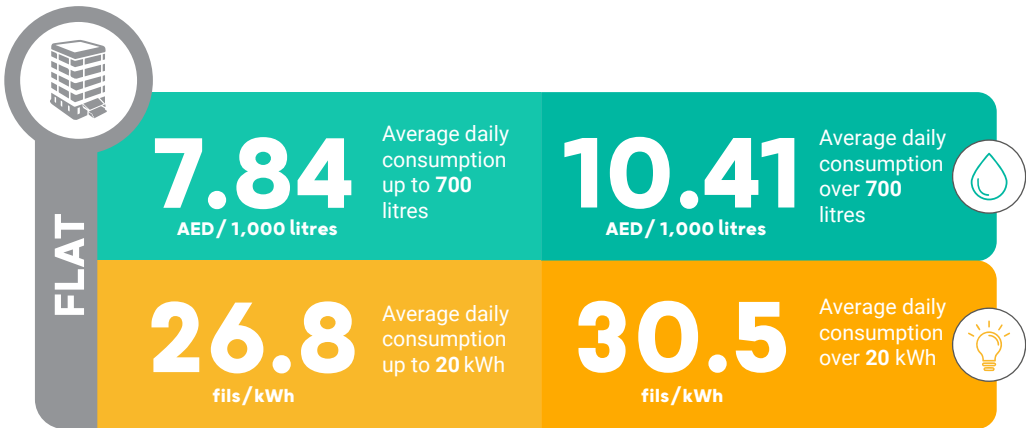
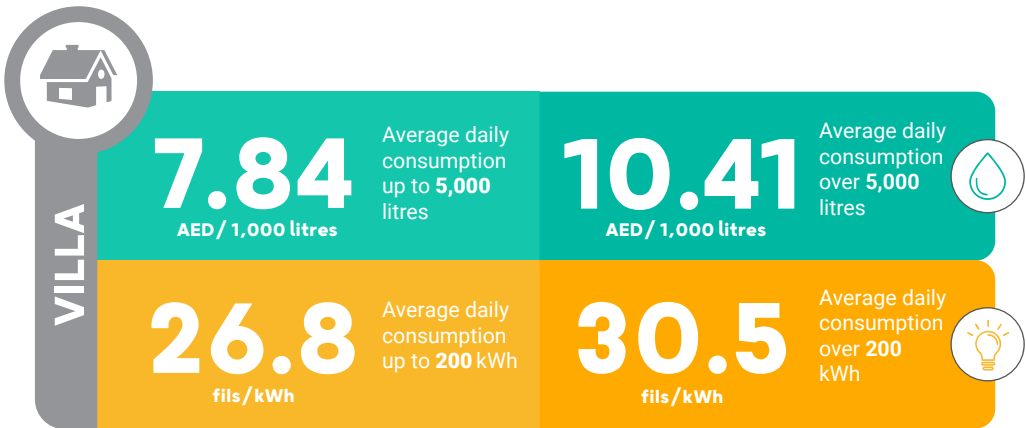
Social Card Holders - UAE Nationals

UAE National residential customers holding a social card issued by the relevant government entity.



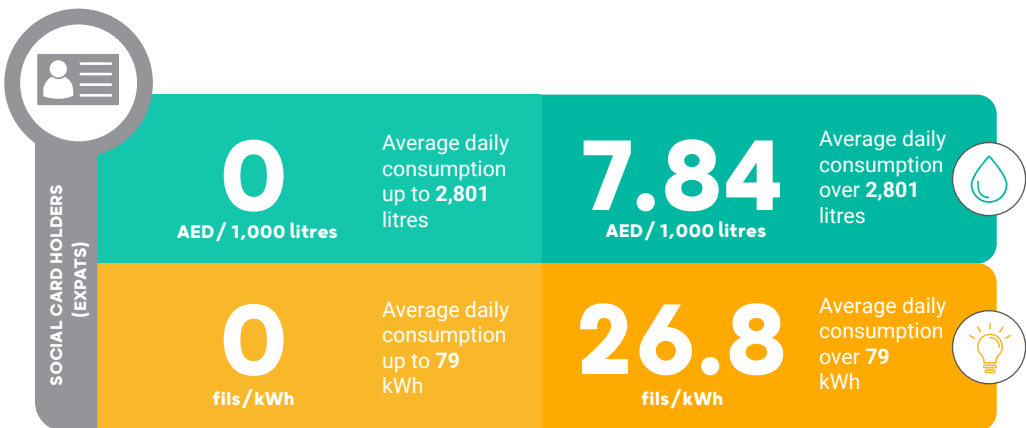
Residential Customers - Expats

All residential customers who do not hold UAE citizenship including account holders in diplomatic residences.



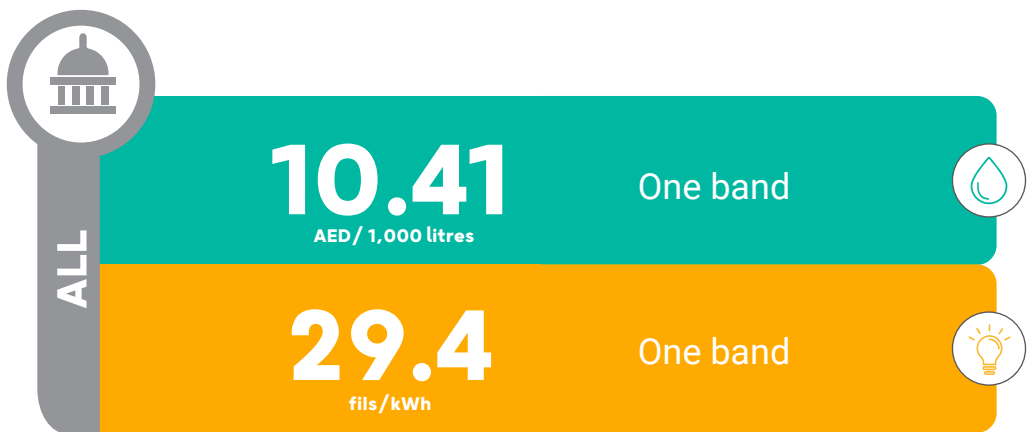
Social Card Holders - Expats

Residential customers holding a social card issued by the relevant government entity, but who do not hold UAE citizenship.



Government Customers

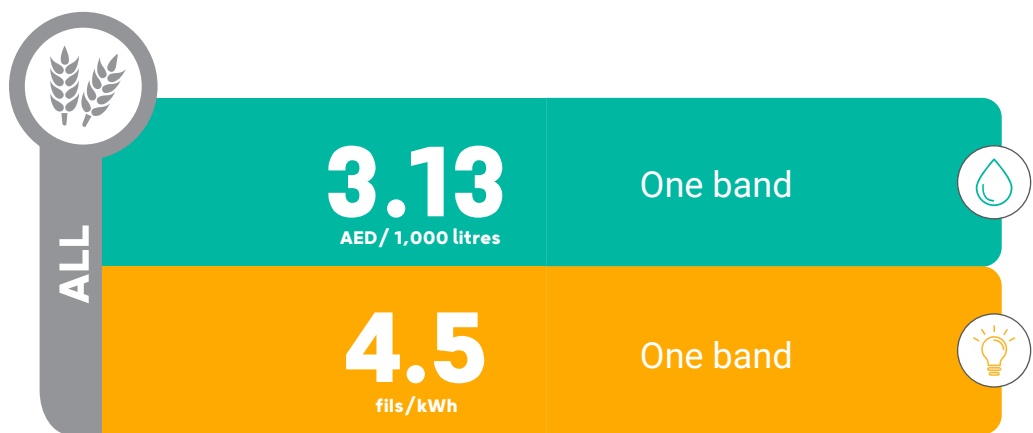
Account holders with premises used principally for government purposes and that are federal and local government departments, public authorities and federal government corporations' premises.



Agriculture Customers

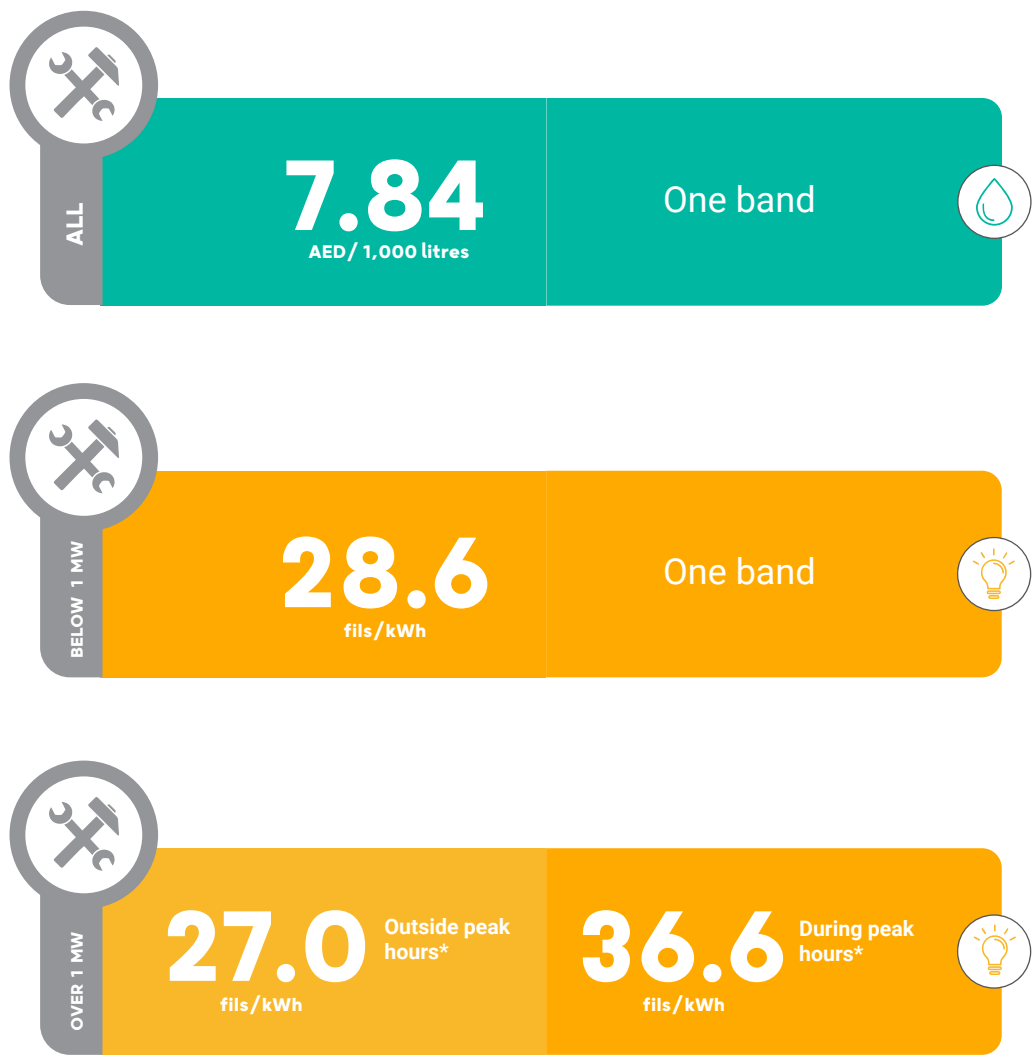
Account holders of premises used principally for agricultural purposes or premises subject to agriculture tariffs such as ranches and private farms, as licensed by the relevant municipality under the title deed of the land and site plan.

In cases where agricultural land is used for commercial purposes, the Commercial tariff will apply.



Industrial Customers

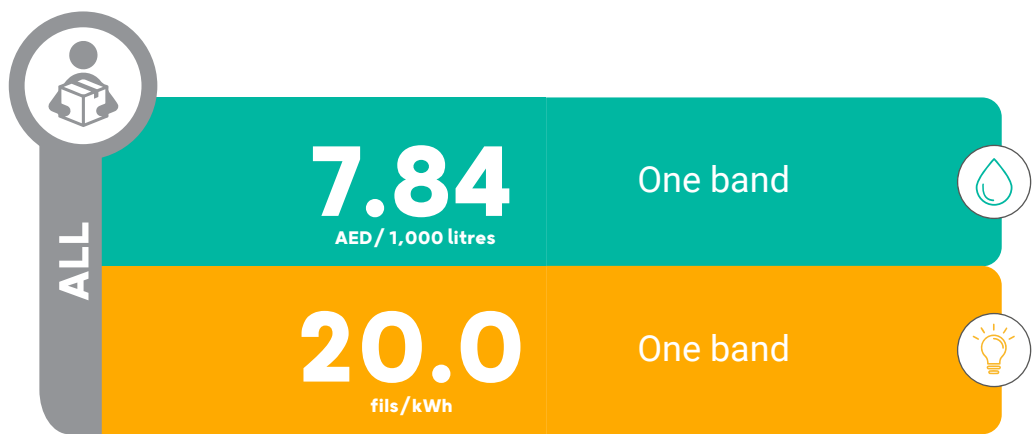
Account holders holding an industrial licence issued by the relevant government entity. For electricity, industrial customers will be classified based on their installed capacity as either below 1 MW or over 1 MW.



* Peak hours are between 10 am to 10 pm from 1 June to 30 September

Commercial Customers

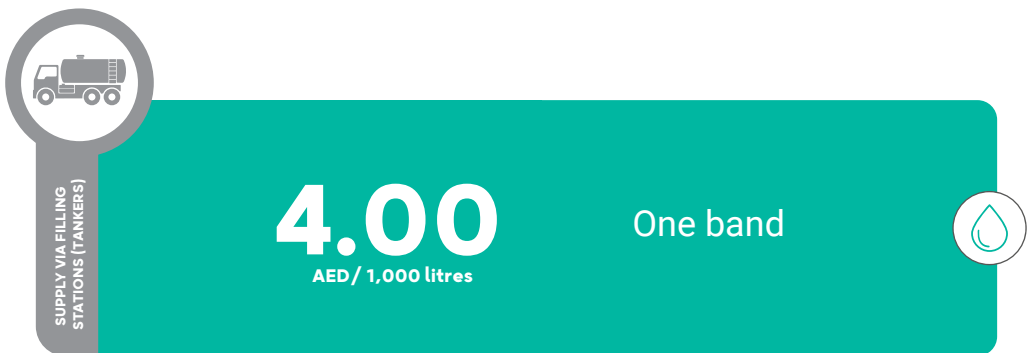
Account holders either holding a commercial licence issued by the relevant government entity, or premises subject to commercial tariffs such as fisheries, livestock and embassy and consulates buildings.



Unmetered Water Supply



Supply Via Filling Stations (Tankers)



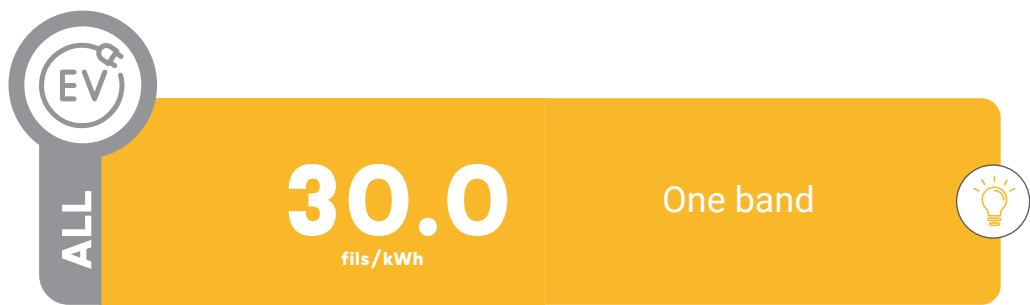
Recycled Water

All customers of recycled water will be charged at the same tariff.



Electric Vehicle Charging Equipment

Account holders using electric vehicle charging equipment at their premises must register with TAQA Distribution so that a separate meter can be installed to register the consumption of the electric vehicle.



Transmission-connected customers

For electricity customers of any segment (Industrial, Commercial etc.) who are connected directly to the transmission network, a fixed tariff has been set for the period 1 January 2023 until 31 December 2027. Please note that it is intended that this will transition to a time-of-use tariff in future.

